



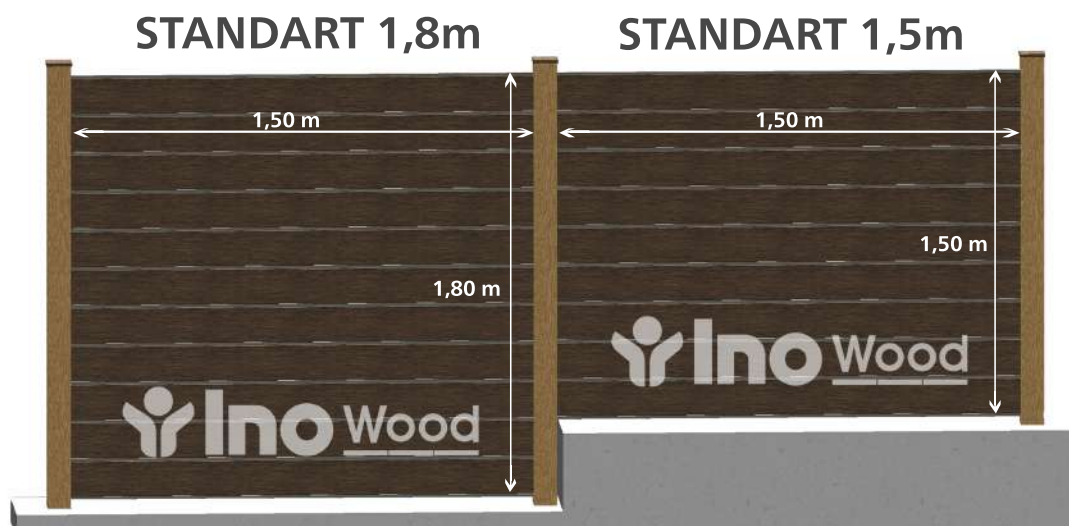
FENCING SYSTEM



Made in LITHUANIA  
using recycled  
materials



# STANDART segments



One **STANDART** package (1 segment) includes:

	1,8 m	1,5 m		1,8 m	1,5 m
Fence Boards <b>AD</b>	x 11	x 9	Insert Profile <b>TIA-2</b>	x 10	x 8
Post <b>ST</b>	x 1	x 1	Connector	x 1	x 1
Post Base <b>PB</b>	x 1	x 1	Self-drilling screws	x 4	x 4
Post Cup <b>D</b>	x 1	x 1	Achors	x 4	x 4
Start/End profile <b>TIA-1</b>	x 2	x 2	Mounting profile <b>FS</b>	x 2	x 2

## UNIQUE fence design

**NEW!**

Metal decor inserts

LED lights

Variety of colours

Any size gap between boards

Gate

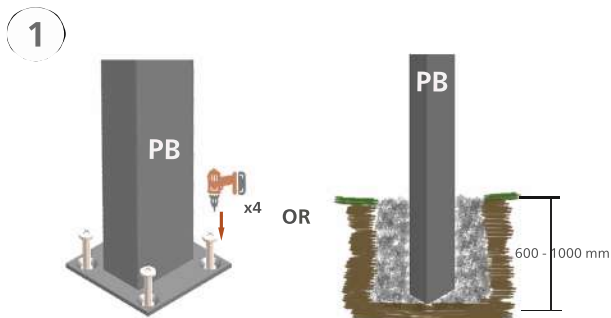
Glass inserts



## WE DESIGN, MANUFACTURE AND INSTALL!

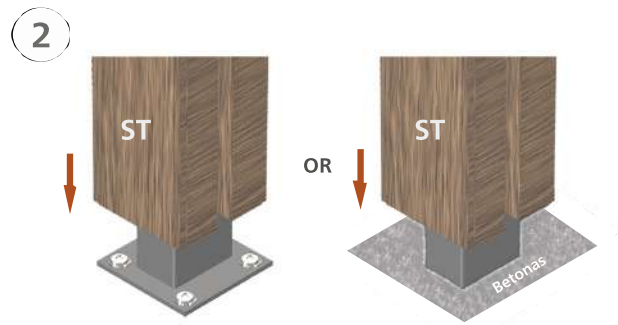
Our designers and constructors team will help you create your unique fence design.





Fix **Post Base (PB)** to the surface using 4 **Sleeve Anchors**

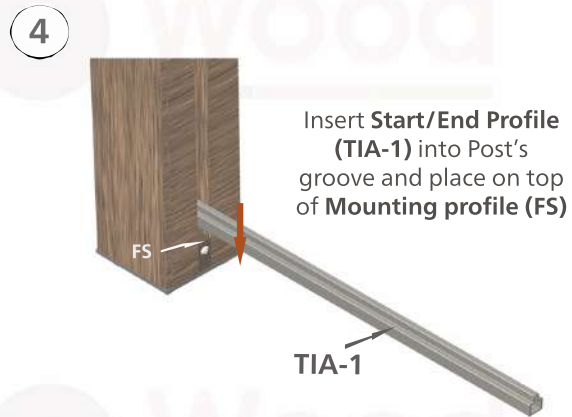
Set a **Post Base** in to the prepared hole and fill it with **Concrete**



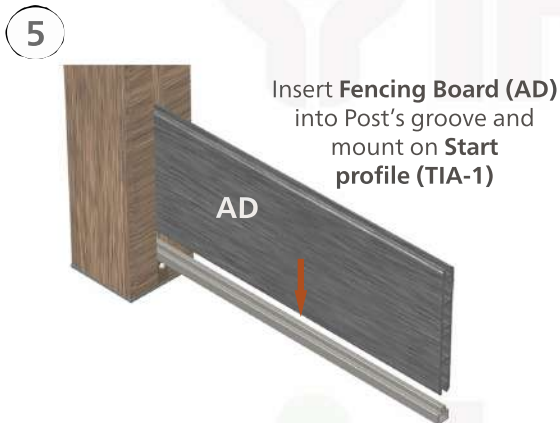
Mount the **Post Profile (ST)** on the **Post Base**



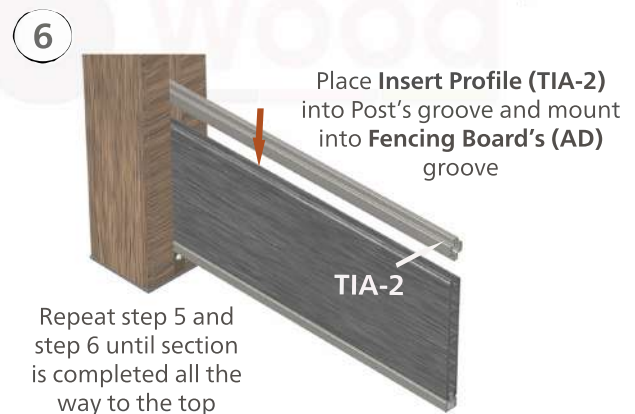
Insert **Mounting Profile (FS)** in to Post's groove and fasten using **Self drilling screw**. Repeat step 1 - step 3 for other Post



Insert **Start/End Profile (TIA-1)** into Post's groove and place on top of **Mounting profile (FS)**

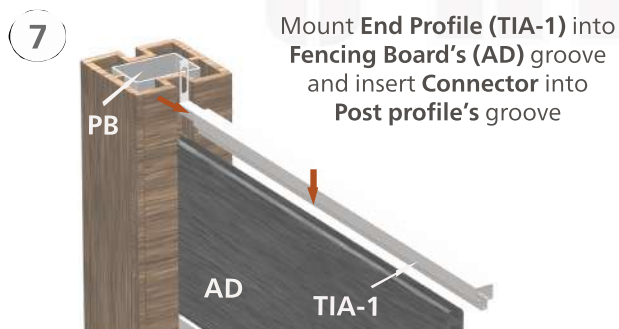


Insert **Fencing Board (AD)** into Post's groove and mount on **Start profile (TIA-1)**



Place **Insert Profile (TIA-2)** into Post's groove and mount into **Fencing Board's (AD) groove**

Repeat step 5 and step 6 until section is completed all the way to the top



Mount **End Profile (TIA-1)** into **Fencing Board's (AD) groove** and insert **Connector** into **Post profile's groove**



Fasten **Connector** to the **Post Profile** and to the **End Profile** using **Self drilling screws** and attach **Post Cup (D)** with **glue**

How to install InoWood composite fence panels

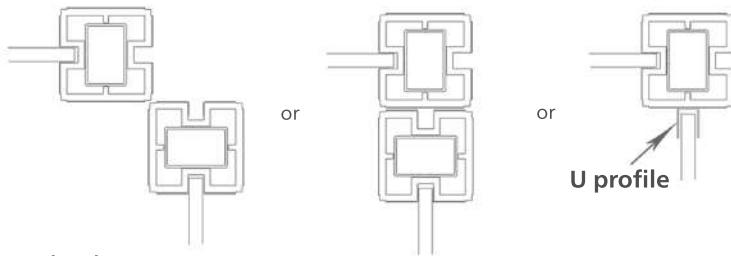
watch on InoWood channel



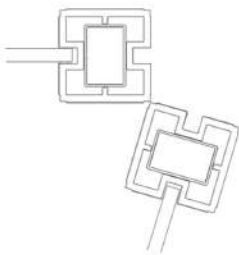
## FENCING ELEMENTS

### Post's angle solutions:

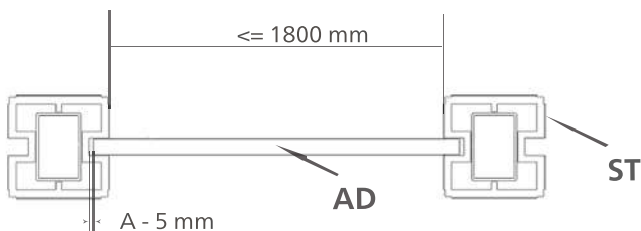
90 degree:



any other degree:



**Mounting profile (FS)** is used to locate the position of the fence profiles. Size of the gap between profiles is depending on the height of FS



WPC reacts to an environmental impact (eg. temperature). Therefore by mounting it is important always to keep at least **5 mm** gap (A) between Posts and profiles for free longitudinal boards movements

